

New Excellent Technology

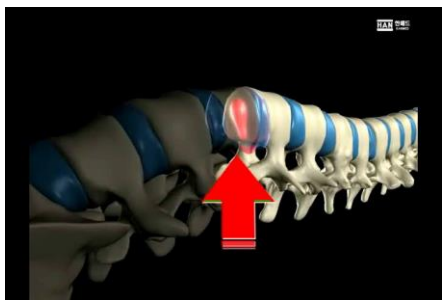
# KINETRAC DAVINCI



Spine Therapeutic Innovation based NET  
Decompression System

[hanmed.koreahq@gmail.com](mailto:hanmed.koreahq@gmail.com)

# The BEST Therapy Kinetrac DAVINCI



- Traction With Target Lordosis Decompression System

Considering the Lordosis of human spine, the kinetrac DAVINCI system implements the Decompression traction.

인류 척추의 형상을 고려하여 인간형 만곡견인 감압이론을 구현한 Decompression System Kinetrac DAVINCI

## Spine Therapeutic Innovation !



# True Decompression System Kinetrac DAVINCI

## C-Spine Function

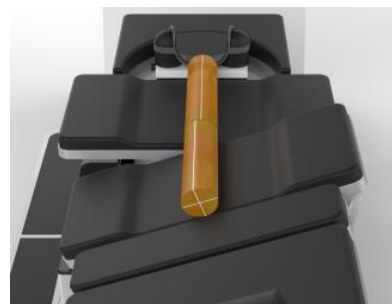


- Traction With Twist directly focused on the Axis of Cervical Spine  $0^{\circ} \sim 20^{\circ} \pm 1^{\circ}$

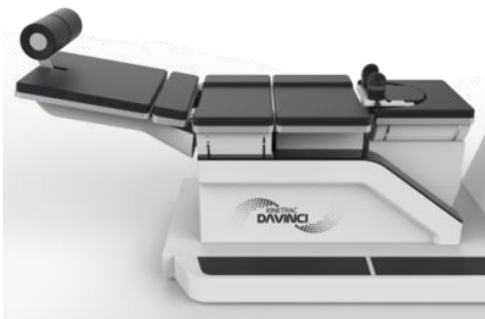


- Traction With Flexion/Extension of Cervical Spine  $10^{\circ} \sim -20^{\circ} \pm 1^{\circ}$

## L-Spine Function

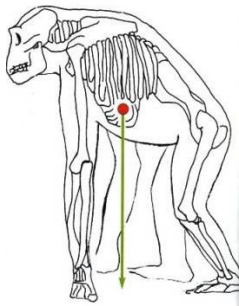


- Traction With Twist directly focused on the Axis of Spine  $0^{\circ} \sim 20^{\circ} \pm 1^{\circ}$

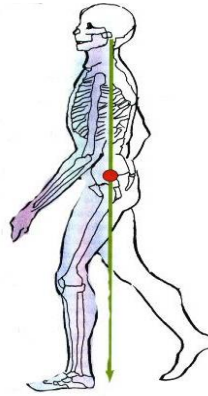


- Traction With Flexion / Extension of Spine  $10^{\circ} \sim -20^{\circ} \pm 1^{\circ}$

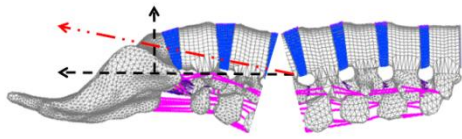
# So far Decompression Therapeutics Appropriate to Animals than Human.



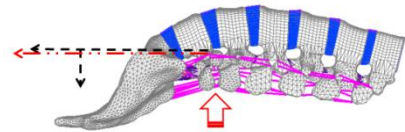
▪ The animal Spine



▪ The human Spine

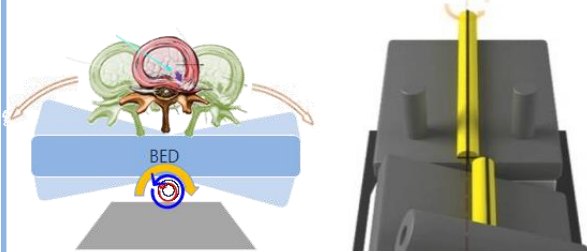


▪ Other Company Traction Method

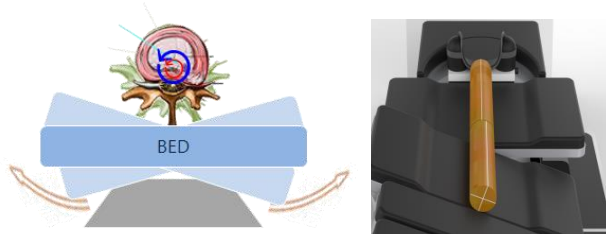


▪ Kinetrac TWTL Traction Method

## - Would you Therapy Human and Animals Spine in The Same Way?



▪ Other Company normal TWIST method



▪ Kinetrac DAVINCI TWIST method

## - The Axis of Rotation of Bed Move on The Spine Must be Twist Technology



Biomechanical analysis of two step traction therapy in the lumbar spine( ELSEVIER- Manual Therapy.2014) - Decompression of KINETRAC

## Specification

- **kinetrac DAVINCI** is not only more multiplied but also more convenient. And it is the most advanced therapy machine that controls all operations. It has Built in computer Programs that controls easily every functions.

- **Main Body : 1 EA**

- Traction power 0 ~ 60kg
- Traction With Target Lordosis L/H 0 ~ 30mm  $\pm 3$
- Traction With Twist directly focused on the Axis of Spine 0° ~ 20°  $\pm 1$
- Traction With Flexion and Extension of Hip joint 10° ~ -20°  $\pm 2$

- **Fully computerized control 1 EA : Computer & Control Table**

- kinetrac DAVINCI can monitor the condition and change of the patients' health through the data management about their disease and it's progress

- Setting-up program depending on disease, symptom, treatment phase, treatment progress, etc. easily adapts optimum programs to patients

- Setting-up for treatment and Progress are complicated, but it always embodies the most advanced program operation system based on adapting clinically useful treatment technique using software with the built in kinetrac DAVINCI

- As soon as it started, all of health conditions and medical treatments progress during the remedy can be monitored at the look

- It monitors supplement, complement, re-modification for medical treatment method during the remedy in State Screen

- For ideal medical treatment, it has complex multimedia functions,

- For example audio function plays even music in same time which is able to enhance comfort and muscle relaxation of patient

- **Dimension**

- Body system L-W-H (3160X800X2170(720), Weight : 450Kg

- AC 220V 60Hz / 300W

